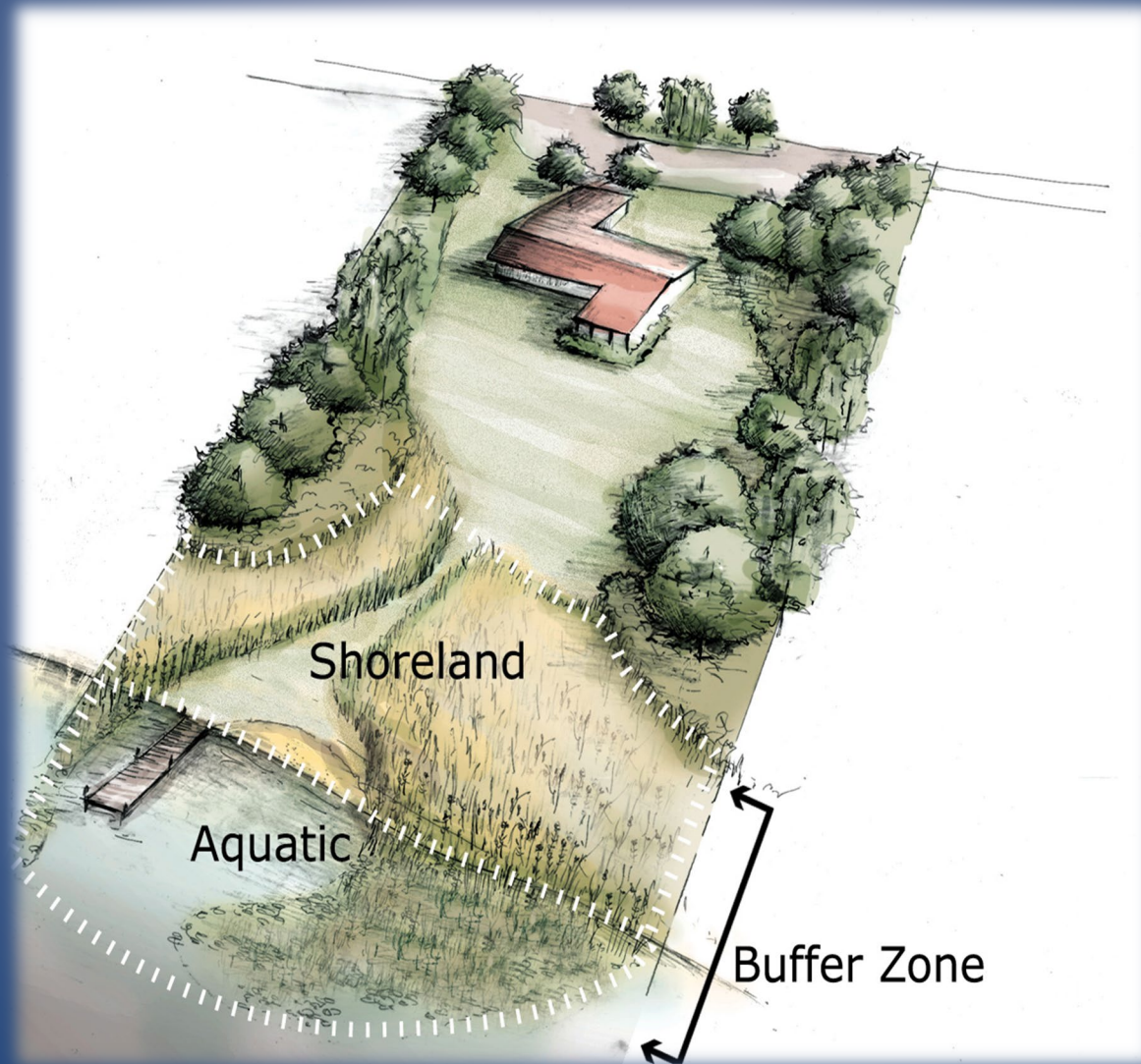
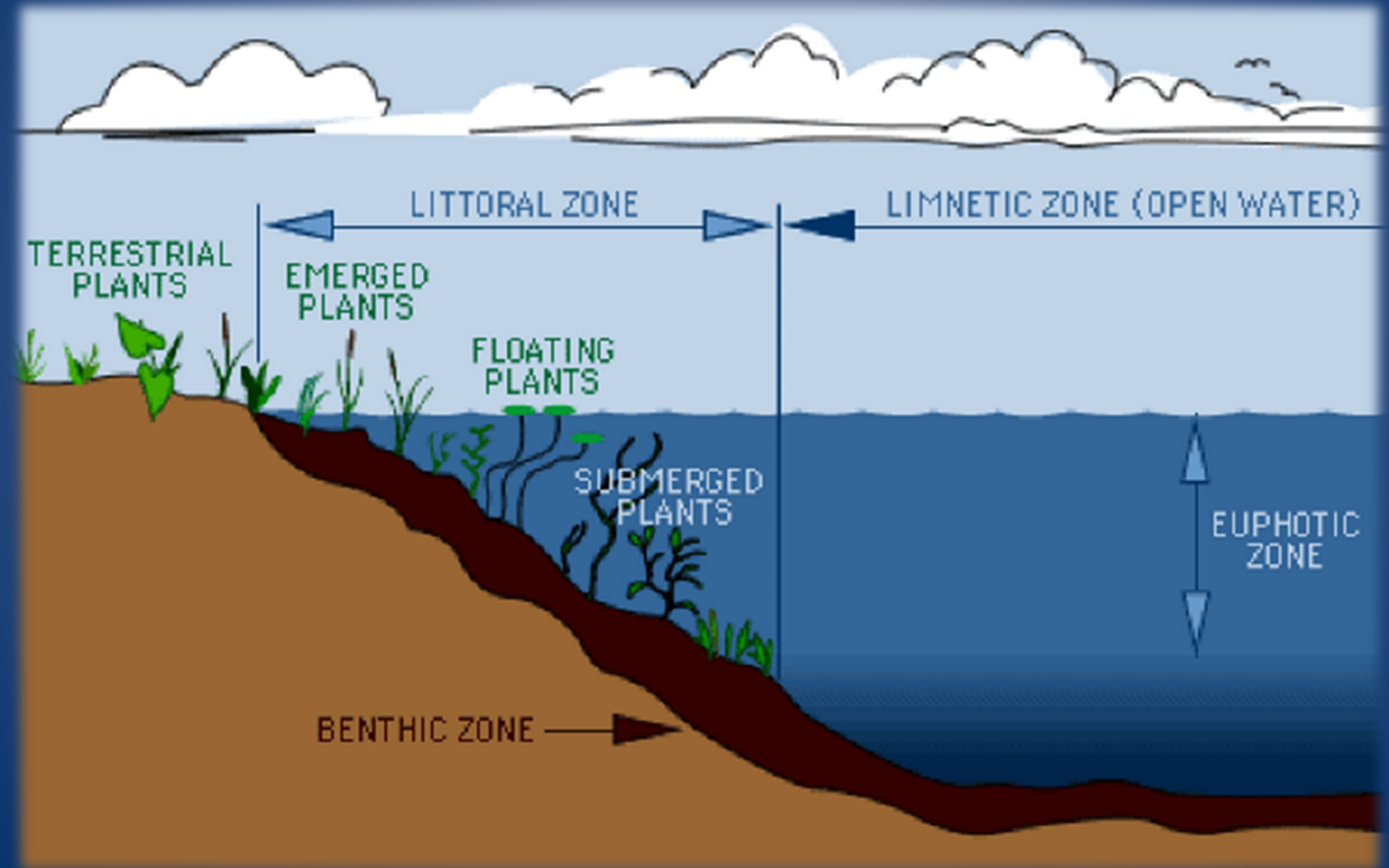


WHAT IS SHORELINE RESTORATION?



Lake Zones



What's the Difference?



Manicured

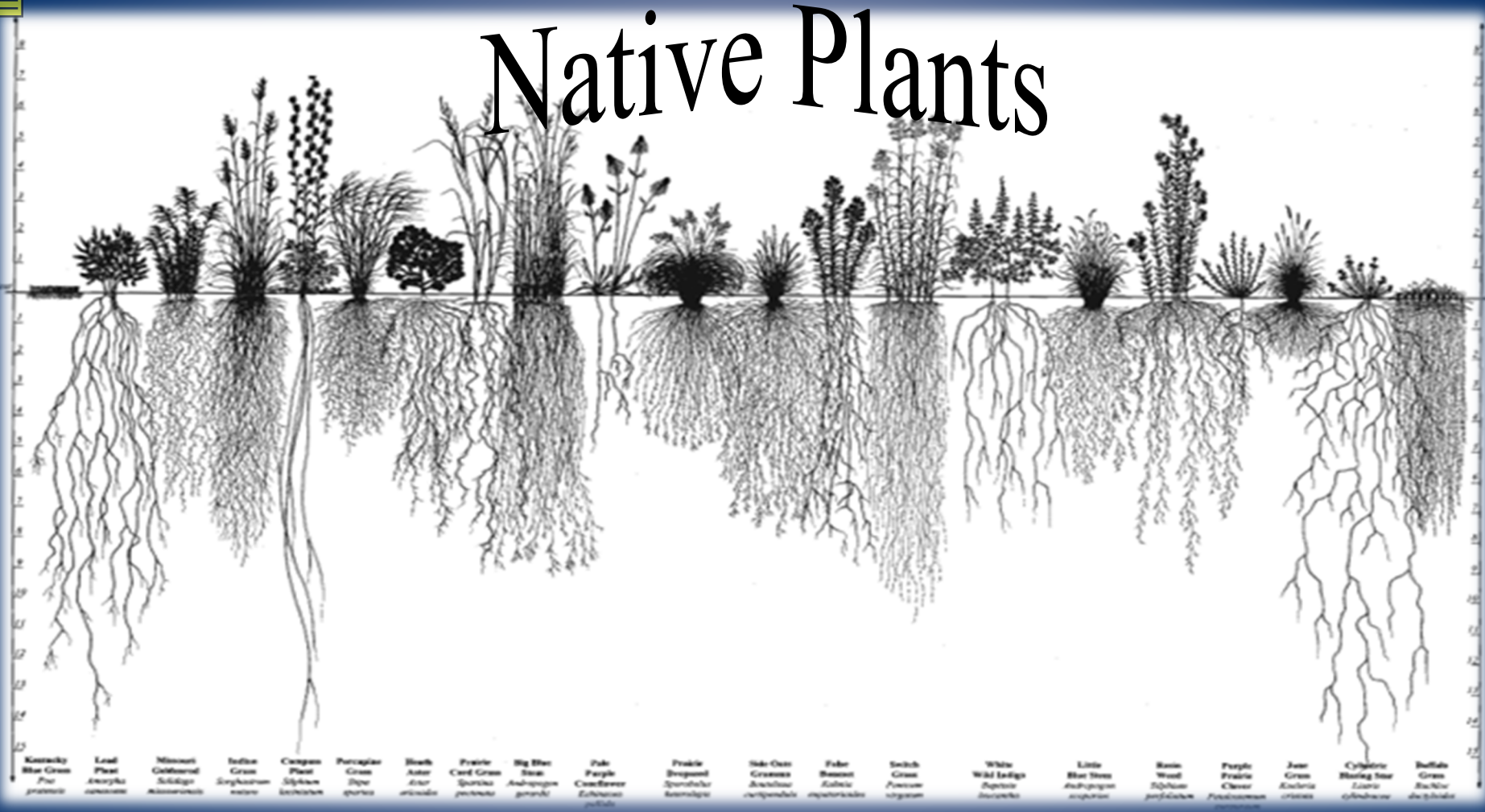
Natural





90% of all lake life is born, raised and fed
in the area where land and water meet.

Native Plants



*** Protect water quality**

- *Filter sediments*
- *Increase infiltration*
- *Reduce erosion / runoff*
- *Take up nutrients*

*** Provide essential habitat**

- *Fish & wildlife habitat*

*** Preserve natural shoreline**

*** Provide privacy**

Layers of Vegetation

Tree canopy
(Upper)

Shrub canopy
(Middle)

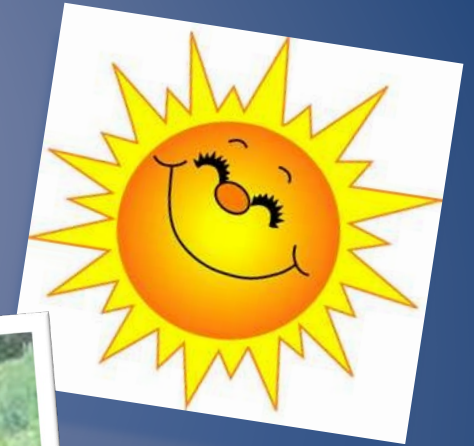
Grasses/ground cover
(Lower)

Duff layer



Factors to Consider

- * Soil
- * Sunlight
- * Slope
- * Vegetation
- * Human Activity



What are the Factors?



Restoration





Contact information:

Travis Tulowitzky, Conservation Technician
P.O. Box 126
Washburn WI 54891

Phone: 715-373-6167

Email: ttulowitzky@bayfieldcounty.org

Note from Friends of the Eau Claire Lakes Area: This presentation was developed by Travis Tulowitzky, who has been a supporter of the LEEP program since its inception and regularly visits classrooms to share his knowledge of shoreline restoration efforts in northern Wisconsin. He developed this presentation to make the strategies and concepts of restoration more applicable to students by giving them the chance to visualize different characteristics of shorelines and the role of human use on erosion.